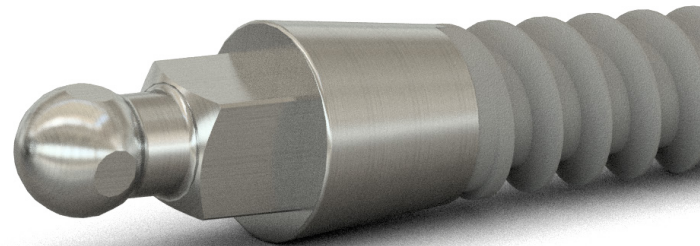
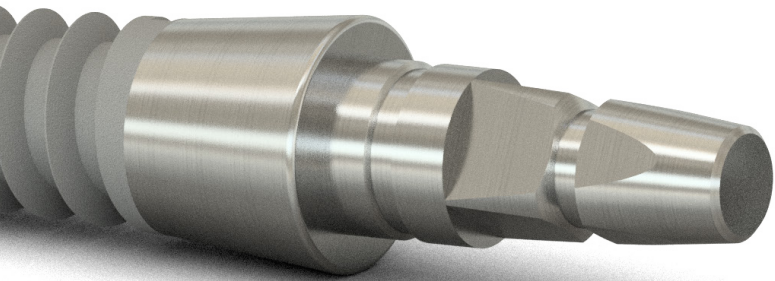


bonafix

surgical & dental implants



minifix
one

minifix
ball

Leading professionals with over 25 years of experience in the fields of periodontics, surgery, prostodontics and engineering converge in Bonafix SDI in order to design and manufacture simple, efficient and reliable implants.

Each stage in the manufacturing process of the MINIFIX line of implants such as micro mechanics, surface treatment, packaging and sterilization is carefully controlled and executed by certified specialists, ensuring always the highest standards in efficiency and quality.

The MINIFIX line of implants is designed to help the dentist solve cases of individual crowns in confined spaces as well as to provide retention in cases of removable partial and total dentures, quickly and with minimal surgical intervention.

Built in fully biocompatible Titanium Alloy, MINIFIX Implants can also be used temporarily as a complement to conventional implants during osseointegration, giving the patient greater comfort, function and aesthetics from the beginning of the treatment.

minifix ball



Versatile and ideal for cases in which partial or total removable dentures are required. Its spheric design with a lower neck, allows for a perfect prosthetic insertion while simplifying removal of the piece for hygiene.

minifix one



The minifix one has a diameter of 2.9 mm, ideal for individual crowns in tight spaces.

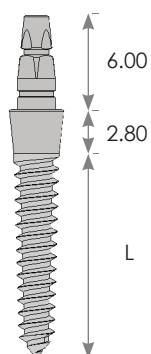
The design of the prosthetic area along with the perfectly fitted plastic cover, facilitates the overrun of the crowns and/or temporary bridges and provides an excellent adaptation, stability and retention to the permanent prosthetic restorations.

All Bonafix mini implants come presented in gamma ray sterile double packaging with the option to include all the prosthetic components.



Table of measures

minifix
one



Length (mm)	Diameter (mm) 2.9
11	MFO2911S
13	MFO2913S
15	MFO2915S

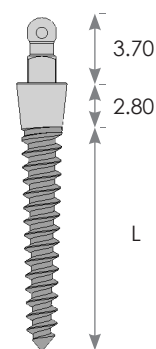
minifix
ball

Thread with short pitch for cortical bone.

Length (mm)	Diameter (mm) 2.0	Diameter (mm) 2.4	Diameter (mm) 2.9
11	MFB2011S	MFB2411S	MFB2911S
13	MFB2013S	MFB2413S	MFB2913S
15	MFB2015S	MFB2415S	MFB2915S

Thread with long pitch for cancellous bone

Length (mm)	Diameter (mm) 2.4	Diameter (mm) 2.9
11	MFB2411L	MFB2911L
13	MFB2413L	MFB2913L
15	MFB2415L	MFB2915L

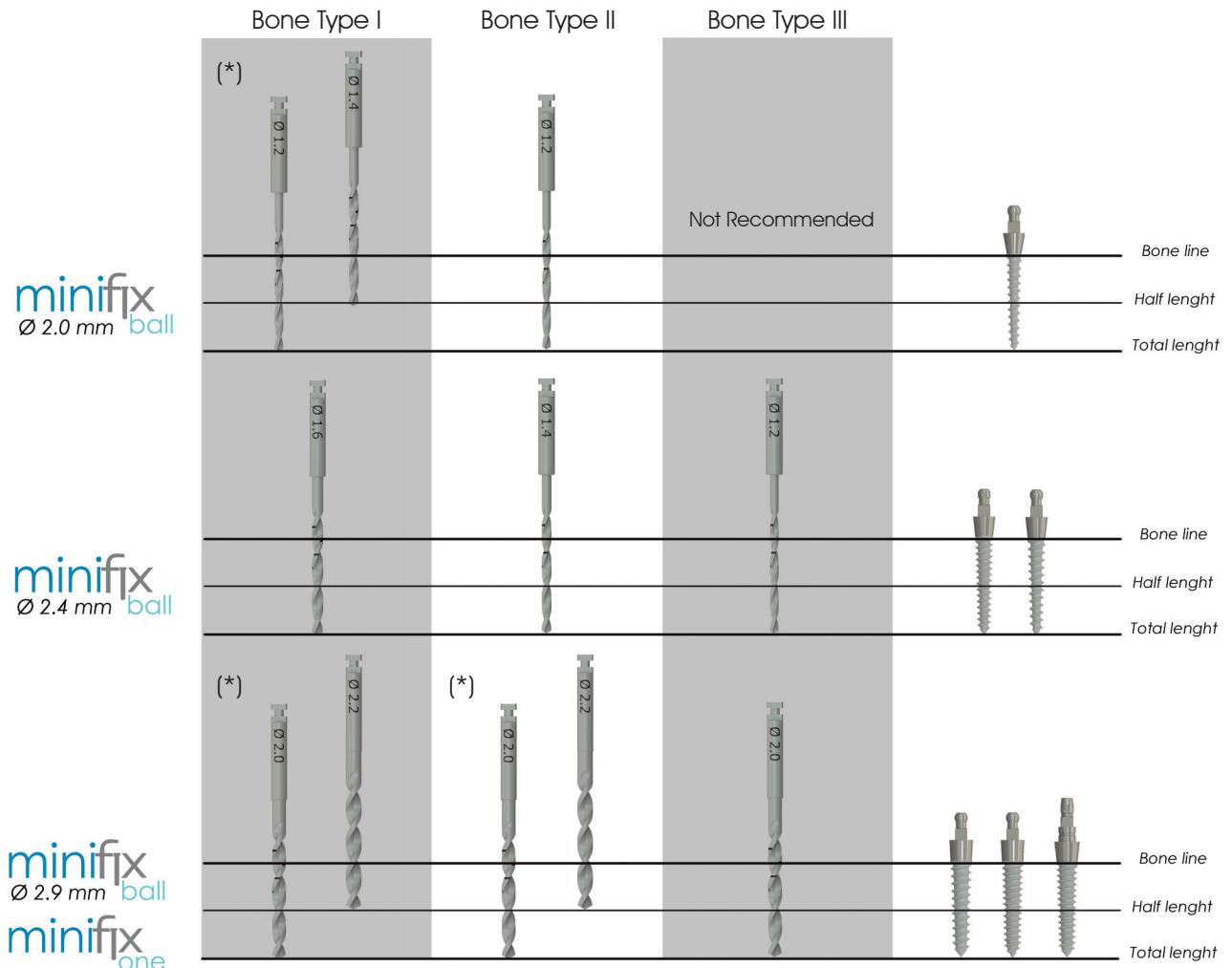


The BONAFIX implants are manufactured in the USA, complying with the quality standards of the FDA and according to the GMP program (Good Manufacturing Practices). Additionally, the manufacturing facilities, surface treatment, packaging and sterilization are certified with the ISO 9001, ISO 13485 standards and those derived from the latter.

Tools



Recomended Insertion Protocol

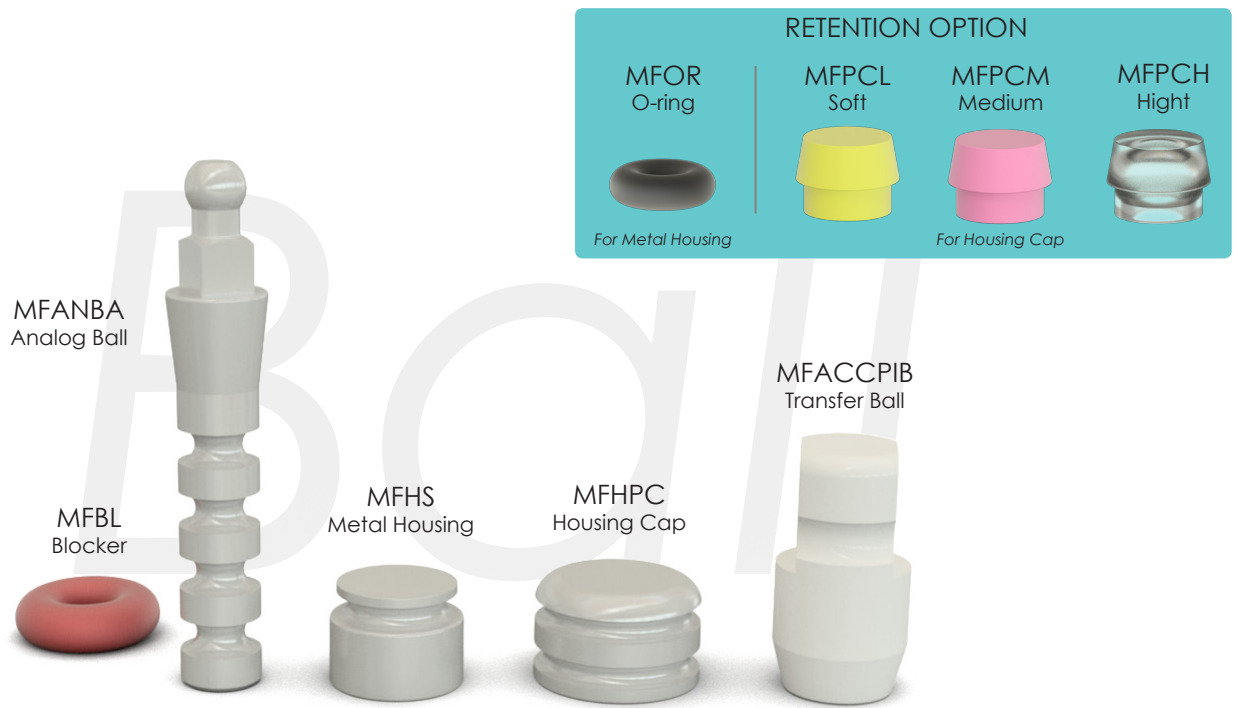


(*) In order to create a desirable step effect, always start with the smaller diameter drill.

Prosthetic Option



For better results Minifix One provides the option of a titanium metal coping, recommended for permanent cemented restorations, and a plastic coping, that can be used as a temporary and/or a full castable abutment for permanent restorations.



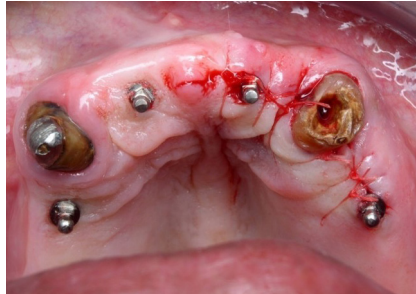
For more adequate restorations and retentive function, Minifix Ball offers three options of highly elastic caps that provide different levels of retention**. Minifix Ball also have the option of the classic o ring-housing combination.

**For more specific information please ask your representative.

Clinical Cases

minifix
ball

Ideal for cases of partial or total removable prostheses, and allows for the perfect insertion of the prostheses and facilitates their removal for hygiene.



minifix
one

Perfect for the permanent restoration in those areas of mesio-distal reduced space.

